

7-12 GEOGRAPHY



CHOOSING THE RIGHT PROGRAM

SECOND NATURE EDUCATION

www.sn-ap.com.au



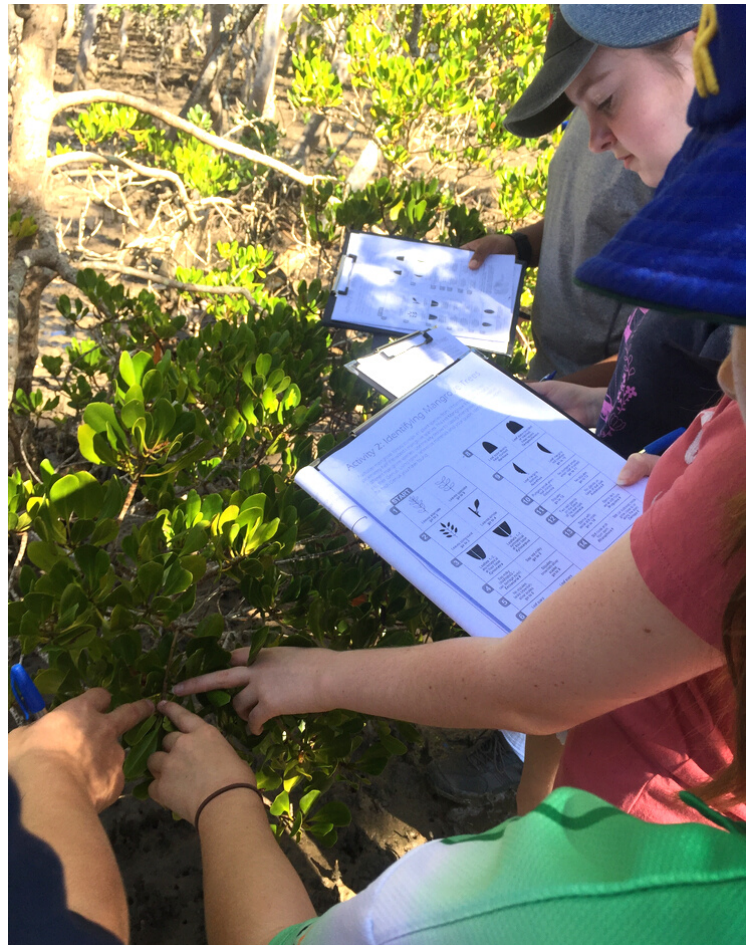


WHERE TO START

Second Nature offers a huge variety of **customised**, educational experiences. These include incursions, excursions and **field** studies, as well as domestic and international tours. The first step is to decide how far you are willing to **travel** with us!

WHAT YOU WANT

You already know what you'd like your students to take away from their trip with Second Nature. Maybe the outcomes are **experiential**, maybe they are commitments to objectives in the Australian **curriculum**, or maybe they are simply to collect **primary data**. These will depend on the year level and unit your students are studying. All of our programs can be **tailored** to your needs, and this resource will direct you towards programs appropriate to your class' learning stage.



HIGH SCHOOL

Year 7

Geography Programs for Year 7 Students

As students progress from primary school to high school geography, the issues they learn about and discuss will become broader, both in scale and subject matter. They are confronted with environmental, economic, social and political issues that affect people on a global scale. Second Nature offers local case studies for the effects of these global issues, which will resonate powerfully with students. We can offer:

Incursions or field work programs within school grounds

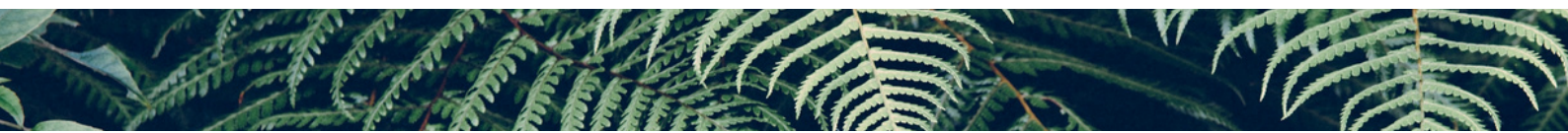
Single day field trips to natural or urban environments

Multi-day camp programs

International tours

Aboriginal cultural programs targeting cross-curricular objectives

The following is an example of a program we offer to year 7 students...



Field Trip: Water in the World

Single day trip to a/multiple local creek/s or waterway/s. Suggested activities include: waterway health assessments (WHAs); visiting a local dam or desalination plant; comprehensive discussion of climate change; talk from a farmer; and a talk from a local Indigenous person.

The following objectives will be addressed along with key geographical enquiry skills:

- Investigate the characteristics and spatial distribution of global water resources (ACHGK037)
- Investigate how the operation of the water cycle connects people and places (ACHGK038)
- Investigate the quantity and variability of water resources in Australia and other places (ACHGK039)
- Investigate the nature of water scarcity and ways of overcoming it (ACHGK040)
- Investigate the economic, cultural, spiritual and aesthetic values of water for people, including Aboriginal and Torres Strait Islander Peoples and/or peoples of the Asia region (ACHGK041)
- Investigate ONE contemporary atmospheric hazard or hydrologic hazard including causes, impacts and responses (ACHGK042)
- Develop geographically significant questions and plan an inquiry, using appropriate geographical methodologies and concepts (ACHGS047 and ACHGS055)
- Collect, select and record relevant geographical data and information, using ethical protocols, from appropriate primary data and secondary information sources (ACHGS048 and ACHGS056).



6 Hours



Work Booklets



Pre/Post Activities



\$15-22/ Student



Charter (Optional)



Meals (Optional)

HIGH SCHOOL

Year 8

Geography Programs for Year 8 Students

By year 8, students are a little more settled into high school life. Teachers move beyond introductory concepts to some more challenging, scientifically rigorous topics such as those that explain the baffling phenomena which shape planet Earth. Second Nature can help teachers apply these global concepts at a local scale, making them more digestible and engaging for students. We can offer:

Incursions or field work programs within school grounds

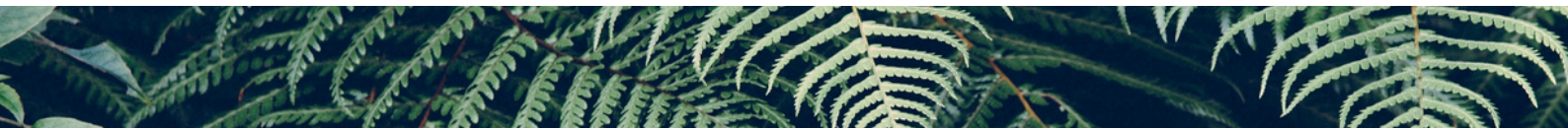
Single day field trips to natural or urban environments

Multi-day camp programs

International tours

Aboriginal cultural programs targeting cross-curricular objectives

The following is an example of a program we offer to year 8 students...



Field Trip: Landforms and Landscapes

Single day trip to a mountain. Suggested activities are: identifying different rock types and how they are formed; exploration of multiple ecosystems (e.g. rainforest, eucalypt forest and heathland); talk from a local Indigenous person about the site's historical use; field work measuring human impacts; an explanation of protected areas; and a discussion of floods. The following objectives will be addressed along with key geographical enquiry skills:

- Investigate different landscapes and the geomorphic processes that create distinctive landforms (ACHGK048 and ACHGK050)
- Investigate the aesthetic, cultural, spiritual and economic value of landscapes and landforms for people, including Aboriginal and Torres Strait Islander People (ACHGK049)
- Investigate the human causes and effects of landscape degradation (ACHGK051)
- Investigate ways people, including Aboriginal and Torres Strait Island Peoples, manage and protect landscapes (ACHGK052)
- Investigate one contemporary geomorphic hazard including causes, impacts and responses (ACHGK053)
- Develop geographically significant questions and plan an inquiry, using appropriate geographical methodologies and concepts (ACHGS047 and ACHGS055)
- Collect, select and record relevant geographical data and information, using ethical protocols, from appropriate primary data and secondary information sources (ACHGS048 and ACHGS056).



6 Hours



Work Booklets



Pre/Post Activities



**\$15-22/
Student**



**Charter
(Optional)**



**Meals
(Optional)**

HIGH SCHOOL

Year 9

Geography Programs for Year 9 Students

Science in year 9 is much about making links between year 7 and year 8 concepts to achieve a fuller understanding of global environmental, social, political or economic issues. Once students understand the properties and causes of these, they will be able to examine management strategies critically and innovate possible solutions with local and/or global effects. Second Nature raises awareness of strategies currently in place to manage local and/or global issues, and encourages students to reflect on their effectiveness, any broader applications and what could be done differently. We can offer:

Incursions or field work programs within school grounds

Single day field trips to natural or urban environments

Multi-day camp programs

International tours

Aboriginal cultural programs targeting cross-curricular objectives

The following is an example of a program we offer to year 9 students...



Living Planet: Biomes and Food Security

Single day trip to a/multiple farm/s and a food processing facility. Suggested activities are: talking to farmers; sampling local produce; collecting case studies of issues facing farmers; and discussing the concepts of food security and loss of biodiversity. The following objectives will be addressed along with key geographical enquiry skills:

- Investigate the distribution and physical characteristics of biomes (ACHGK060)
- Investigate the human alteration of biomes to produce food, industrial materials and fibres and the environmental effects of these alterations (ACHGK061)
- Investigate environmental challenges to food production for Australia and other areas of the world (ACHGK063)
- Investigate the capacity of the world's biomes to achieve sustainable food security for Australia and the world (ACHGK064)
- Develop geographically significant questions and plan an inquiry, using appropriate geographical methodologies and concepts (ACHGS047 and ACHGS055)
- Collect, select and record relevant geographical data and information, using ethical protocols, from appropriate primary data and secondary information sources (ACHGS048 and ACHGS056).



6 Hours



Work Booklets



Pre/Post Activities



\$18-28/ Student



Charter (Optional)



Meals (Optional)

HIGH SCHOOL

Year 10

Geography Programs for Year 10 Students

Year 10 is an important crossroad in the geography career of many students. At most schools, this is the year where students must elect if they intend to pursue geography in future grades. As a teacher, this is your last chance to make an impression on your students. We want to encourage students to continue with Geography so that their generation has the capability to step up to the global stage and address the ever more pressing issues that threaten humanity. This is therefore a great year to offer an informative, fun and memorable experience with Second Nature. We can offer:

Incursions or field work programs within school grounds

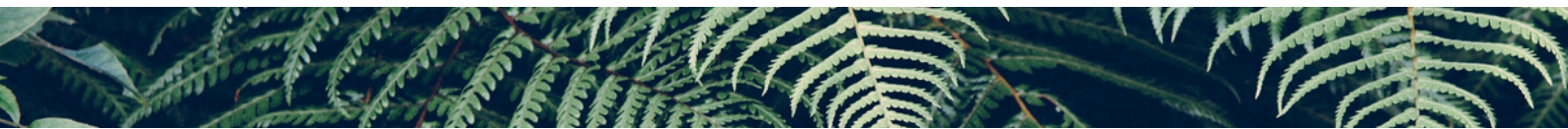
Single day field trips to natural or urban environments

Multi-day camp programs

International tours

Aboriginal cultural programs targeting cross-curricular objectives

The following is an example of a program we offer to year 10 students...



Field Trip: Environmental Change and Management

Single day trip to a local beach. Suggested activities are: walking from a coastal town onto the beach and surveying the changes in landscape that occur with a field sketch; discussing the consequences of human disturbances including erosion and invasive species; guided investigation on the topic of environmental change; and collecting data that can be used for assessment. The following objectives will be addressed along with key geographical enquiry skills:

- Investigate human-induced environmental changes across a range of scales (ACHGK070)
- Investigate environmental management, including different worldviews and the management approaches of Aboriginal and Torres Strait Islander Peoples (ACHGK071 and ACHGK072)
- Select ONE type of environment in Australia as the context for comparative study with at least ONE other country:
 - i. Investigate the causes, extent and consequences of environmental change (ACHGK073)
 - ii. Investigate the management of the environmental change (ACHGK074 and ACHGK075)



3-6 Hours



Work Booklets



Pre/Post Activities



**\$15-22/
Student**



Charter (Optional)



Meals (Optional)

SENIOR

Year 11

Geography Programs for Year 11 Students

In the senior years, there is a growing emphasis on conducting fieldwork investigations that result in original, primary data. Field trips offered by Second Nature to year 11 and 12 students are therefore more rigorous than those offered to previous grades. This is because they are structured around the scientific process, include assistance with field work, and result in quality primary data that can be used for assessment. Year 11 content focuses on measuring or quantifying environmental issues by using the scientific process. This teaches students skills they could carry into future geography careers. We can offer:

Incursions or field work programs within school grounds

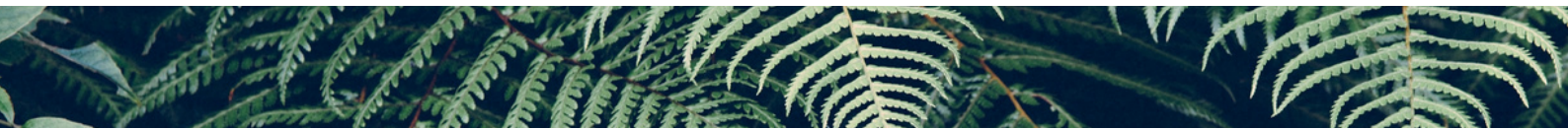
Single day field trips to natural or urban environments

Multi-day camp programs

International tours

Aboriginal cultural programs targeting cross-curricular objectives

The following are examples of programs we offer to year 11 students...



Field Trip: Natural and Ecological Hazards

Natural and Ecological Hazards multi-day camp, where students visit a waterway that is affected by a localised ecological hazard (e.g. eutrophication or salinisation). Suggested activities are: physio-chemical water testing; macro-invertebrate sampling; visit to a water/wastewater treatment plant or desalination plant; talk from a council worker responsible for monitoring the hazard under investigation; and interpretative walks.

The following objectives will be addressed along with key geographical enquiry skills and field work requirements:

- An overview of the nature of natural hazards (atmospheric, hydrological and geomorphic) and ecological hazards (ACHGE013)
- The concept of risk as applied to natural and ecological hazards (ACHGE013)
- The temporal and spatial distribution, randomness, magnitude, frequency and scale of spatial impact of natural and ecological hazards at a global scale (ACHGE014)
- The role of spatial technologies in the study of natural and ecological hazards (ACHGE015)
- Depth study of an ecological hazard (ACHGE022 - ACHGE027)

This multi-day camp (recommended) can be replaced with a single-day trip. Alternatively, the camp program can be tailored to include a depth study of a natural hazard as well, covering curriculum objectives ACHGE016 through to ACHGE021.



**2 Days
or 5 Hours**



**Work
Booklets**



**Pre/Post
Activities**



**\$159-199/
Student**



**Charter
(Optional)**



**Meals
(Optional)**

SENIOR

Year 11

Field Trip: Planning Sustainable Places

Single day trip to a built environment. Suggested activities are: field work measuring traffic congestion and noise pollution; talk from an urban planner or council worker about a local challenge affecting sustainability/livability in the area (e.g. traffic congestion); talk from a local Indigenous person about the effect of the challenge on their clan's cultural identity; and interviews with tourists and local residents to gauge how they are affected by the issue. The following objectives will be addressed along with key geographical enquiry skills and field work requirements:

- The process of urbanisation, its implications for world population growth, human wellbeing and urban and rural places (ACHGE039)
- The economic and environmental interdependence of urban and rural places (ACHGE040)
- The spatial distribution of metropolitan, regional, rural and remote places in Australia, and the factors that have contributed to this (ACHGE041)
- The changing demographic characteristics and economic functions of metropolitan, regional, rural and remote places in Australia (ACHGE042)
- An overview of challenges for rural and remote places in Australia, including Indigenous communities (ACHGE043)
- An overview of challenges in metropolitan and regional cities in Australia (ACHGE044)
- An overview of the challenges faced in megacities in developing countries. (ACHGE045)
- Depth study of challenges facing a place in Australia (ACHGE046 - ACHGE049)



6 Hours



Work Booklets



Pre/Post Activities



\$18-25/ Student

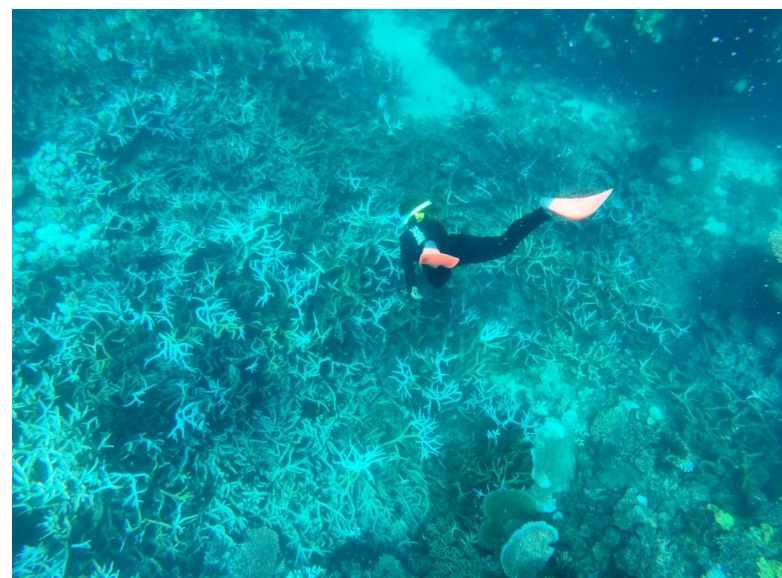
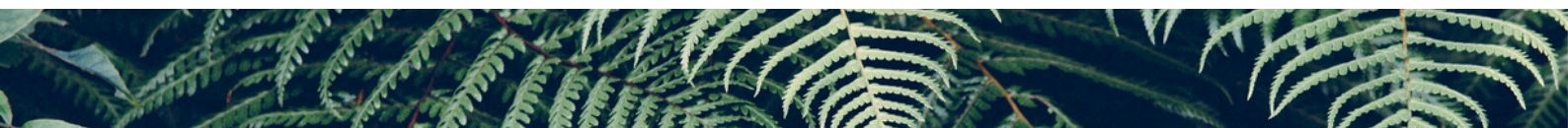


Charter (Optional)



Meals (Optional)

This program can be replaced with a multi-day camp that includes team building activities, nature walks and/or visits to tourist attractions in the vicinity of the excursion location.



SENIOR

Year 12

Geography Programs for Year 12 Students

In the senior years, there is a growing emphasis on conducting fieldwork investigations that result in original, primary data. Field trips offered by Second Nature to year 11 and 12 students are therefore more rigorous than those offered to previous grades. This is because they are structured around the scientific process, include assistance with field work, and result in quality primary data that can be used for assessment. Year 12 content focuses on the implications of environmental and social change on human societies. This may be the inspiration students need to pursue careers in geography. We can offer:

Incursions or field work programs within school grounds

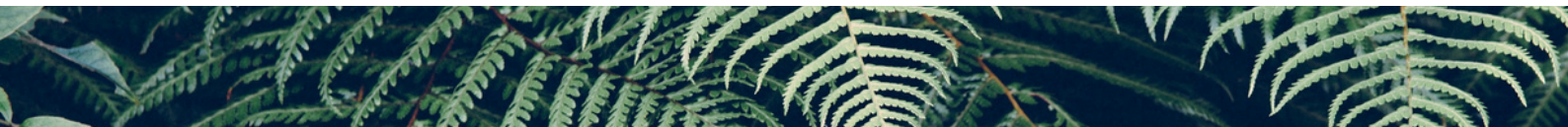
Single day field trips to natural or urban environments

Multi-day camp programs

International tours

Aboriginal cultural programs targeting cross-curricular objectives

The following are examples of programs we offer to year 12 students...



Field Trip: Land Cover Transformations

Multi-day camp to a rainforest and adjacent farmland. Suggested activities are: field work measuring physical factors and biodiversity at two contrasting rainforest sites, one of which is affected by human activity; discussing land or water management challenges in light of the data collected; talk from a farmer; talk from a national park ranger; and a depth study of a local program addressing the specified management challenge/s. The following objectives will be addressed along with key geographical enquiry skills and field work requirements:

- The identification and classification of land cover change using remotely sensed images and aerial photographs. (ACHGE065)
- The interpretation of data sourced from spatial technologies and fieldwork to explain the nature, rate, extent and consequences of land cover change. (ACHGE066)
- World population growth, growing affluence, advances in technology and their impact on the rate and extent of land cover change and biodiversity. (ACHGE067)
- The differences in the process of land cover change between countries due to factors such as government policy, institutional arrangements, land ownership, type of economy, ideology and culture, in addition to the range of physical factors. (ACHGE068)
- Methods of projecting changes in land cover using spatial modelling, incorporating both environmental and socioeconomic variables. (ACHGE069)
- Indigenous peoples' land management practices and their impact on land cover over time including those of Aboriginal and Torres Strait Islander Peoples. (ACHGE070)
- The relationship between land cover change and climate change and the long-term impact of climate change on land cover. (ACHGE071)
- The impacts of land cover change on local and regional environments. (ACHGE072)
- Human-generated land cover change and its consequences including: the competitive advantages of indigenous and introduced species; the balance within each of these groups; and the effects such changes might have on land cover changes and biodiversity. (ACHGE073)
- The concept of anthropogenic biomes and its implications for our understanding of the functioning of the world's ecosystems. (ACHGE074)
- Depth study of the interrelationship between land cover change and changes in biodiversity (ACHGE079 - ACHGE082)
- Depth study of a program to address land cover change (ACHGE083 - ACHGE087)



2 Days



Work Booklets



Pre/Post Activities



\$159-199/ Student



Charter (Optional)



Meals (Optional)

SENIOR

Year 12

Field Trip: Global Transformations

Multi-day camp to an Australian coal mine. Suggested activities are: presentation on international integration; talk about the value of coal including through exports from a coal mine representative; talk about the consequences of coal mining from an environmental group representative; and a tour of the coal mine. The following objectives will be addressed along with key geographical enquiry skills and field work requirements:

- The process of international integration, especially as it relates to the transformations taking place in the spatial distribution of production and consumption of commodities and services, and the diffusion and adaptation of ideas, meanings and values that continuously transform and renew cultures. (ACHGE099)
- Advances in transport and telecommunications technologies as a facilitator of international integration including their role in the expansion of world trade, the emergence of global financial markets and the dissemination of ideas and culture through corporate, retail outlets, and the hubs of international literature, music, film and media. (ACHGE100)
- The economic and cultural importance of world cities in the integrated global economy and their emergence as centres of cultural innovation, transmission and integration of new ideas about the plurality of life throughout the world. (ACHGE101)
- The re-emergence of China and India as global economic powers and the relative economic decline but sustained cultural influence of the United States of America and Europe. (ACHGE102)
- Depth study of an international economic integration (ACHGE103 - ACHGE110)

This excursion is interchangeable with an overseas tour based on a case study in international cultural integration. Destinations are negotiable.



2 Days
or 7 Days



Work
Booklets



Pre/Post
Activities



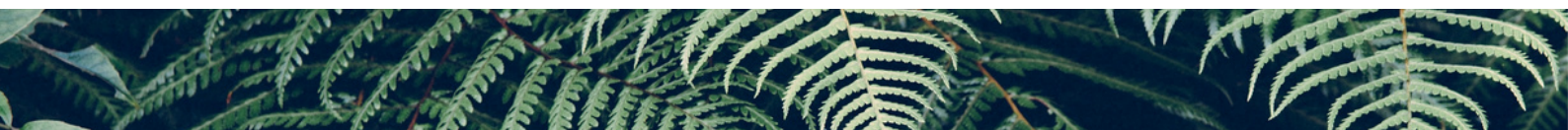
\$179-199/
Student



Charter
(Optional)



Meals
(Optional)



✈ INTERNATIONAL TOURS ✈

available for year 6 students and above!

Second Nature offers amazing opportunities for humanities studies and cultural immersion across 32 destinations in Asia, Europe, North America, South America and North Africa! One of our education officers will work with you to design an itinerary that covers syllabus objectives and provides an unforgettable experience for your students. All trips include highly trained facilitators, risk assessments, travel insurance and a money-back guarantee. Get in touch with us today to learn more about travel opportunities for your school.



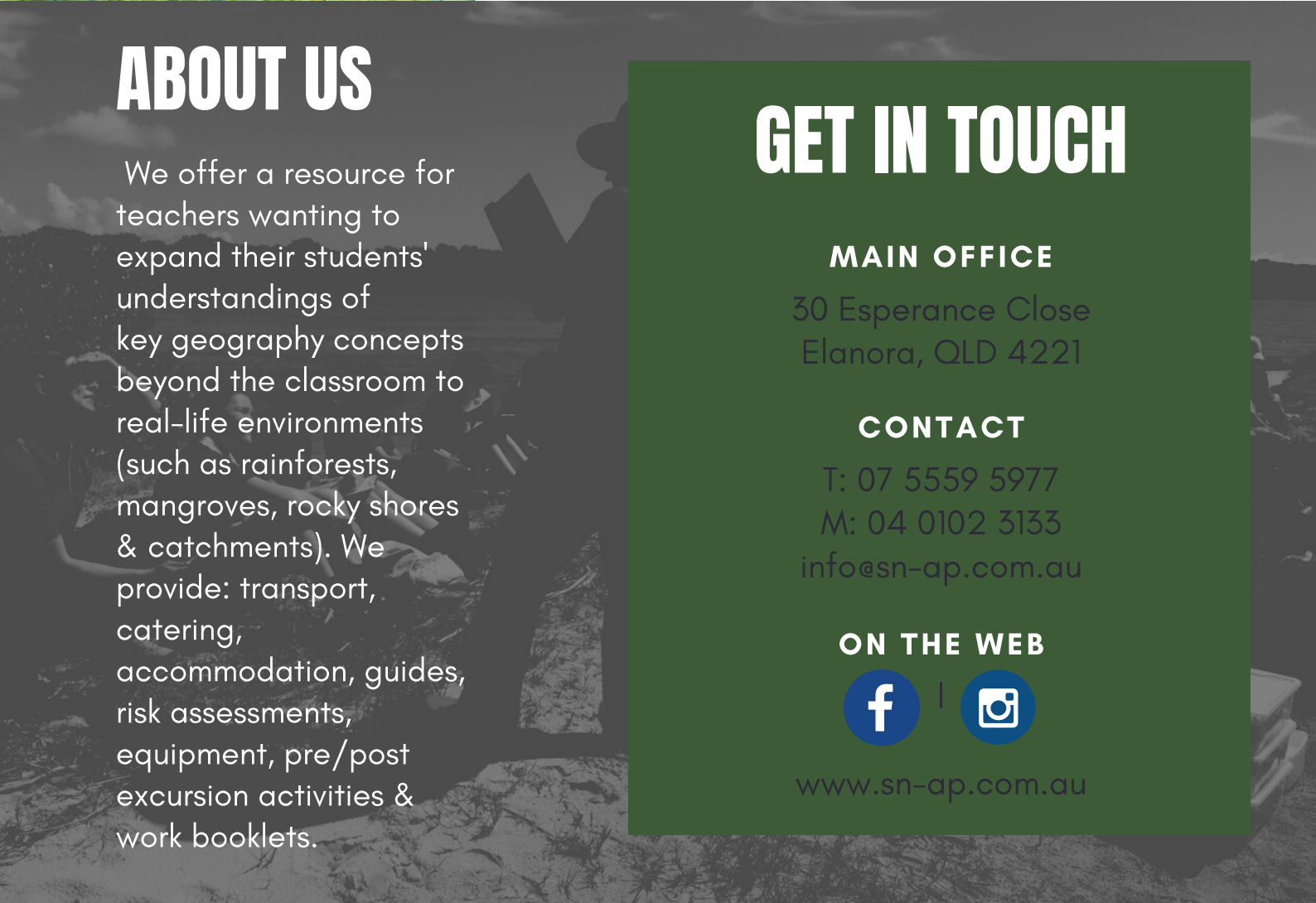


TAILORED FOR YOU

NO MATTER WHAT YEAR LEVEL, NO MATTER WHAT DESTINATION...

All of our excursions can be tailored to the needs of your school. This means that the excursions you have read about here can be adapted for any year level, ecosystem, length of time or distance of travel. If you would like to book one of our programs, make sure to mention any special requests in your enquiry. We will be happy to oblige.

ABOUT US



We offer a resource for teachers wanting to expand their students' understandings of key geography concepts beyond the classroom to real-life environments (such as rainforests, mangroves, rocky shores & catchments). We provide: transport, catering, accommodation, guides, risk assessments, equipment, pre/post excursion activities & work booklets.

GET IN TOUCH

MAIN OFFICE

30 Esperance Close
Elanora, QLD 4221

CONTACT

T: 07 5559 5977
M: 04 0102 3133
info@sn-ap.com.au

ON THE WEB



www.sn-ap.com.au